



# JUKI®

**JUKI Smart Solutions**  
Innovate Your Business

Conference  
«Modernization. Industry 4.0» in  
IVANOVO on November 14th

1. Established: December 15, 1938
2. Head Office: 2-11-1, Tsurumaki, Tama-shi, Tokyo
3. Number of employees 6,245 (Employee ratio: 63% for overseas)
4. Number of affiliated companies: 31





## JUKI Central Europe in Warsaw

JUKI Central Europe has been established and located in Warsaw, Poland in 2005. From Warsaw sales is coordinated all over Europe, CIS and North African countries.



**Main warehouse in Sassenheim, Holland**

JUKI main European warehouse is located in Sassenheim, nearby Rotterdam harbor. From there deliveries are distributed all over JCE sales territory.

Everyday up to 50 shipments are leaving the stock, in order to reach our valued customers and distributors.



# JUKI Smart Factory

- 
1. AUTOMATIZATION
  2. DIGITALIZATION
  3. NETWORK

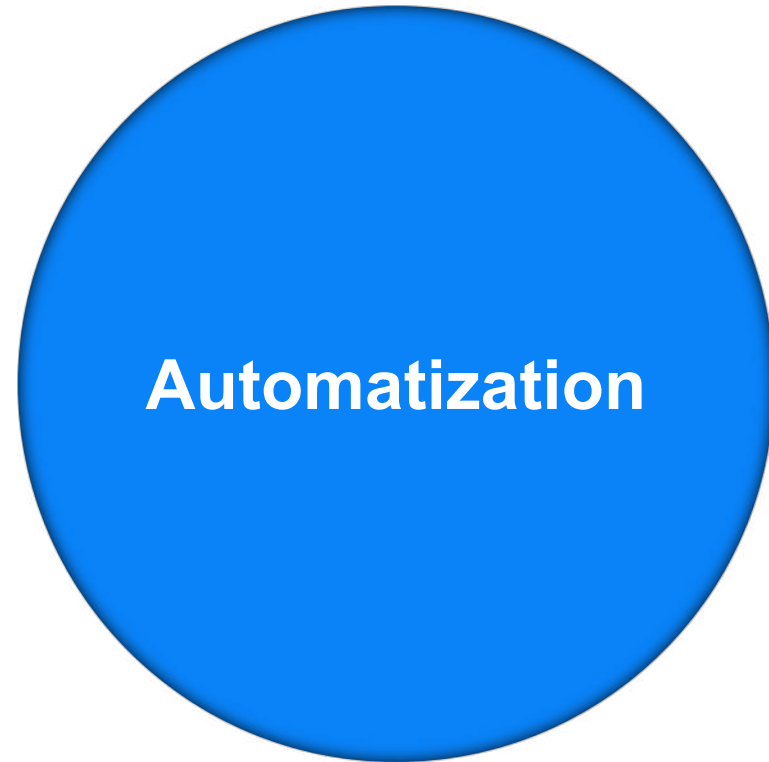




**Automatization**

**Digitalization**

**Network**



**Automatization**



# Automatization

**JUKI®**

**Computer-controlled cycle machine**

**Button-neck-wrapping**

**Buttonholing indexer**

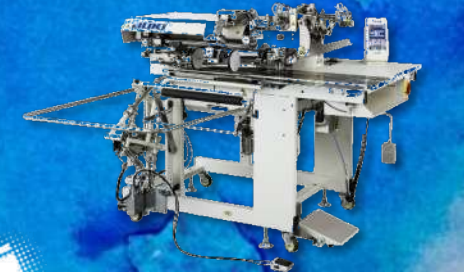
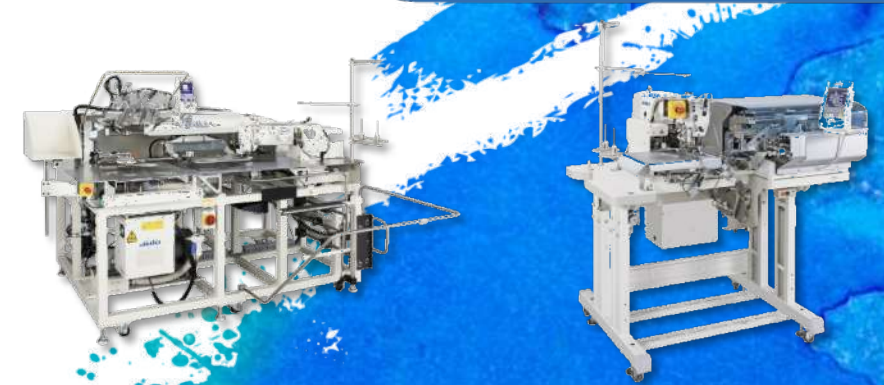
**Edge control seamer**

**Belt-loop attaching**

**Welting machine**

**Pocket setter**

**... and more**





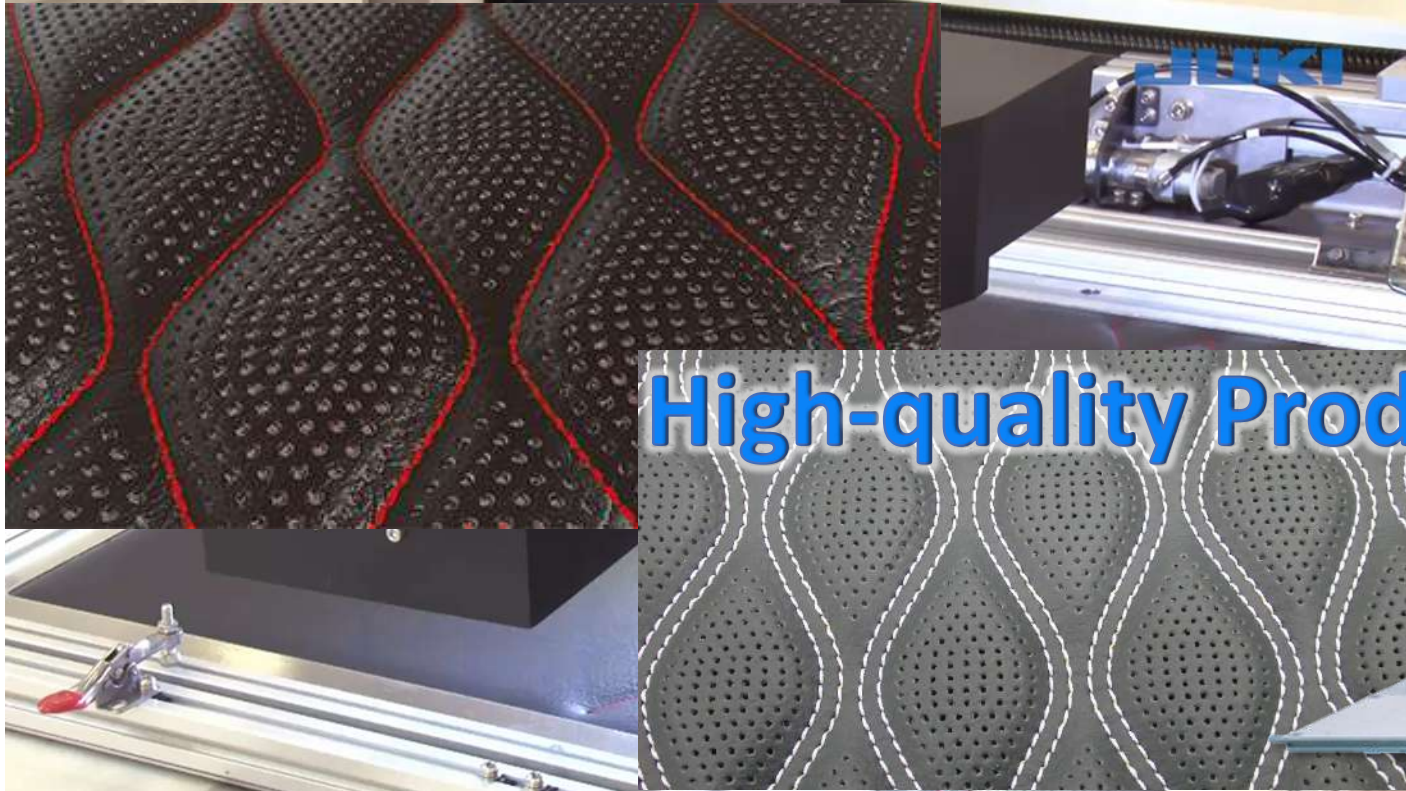
# AMS-251 : 1-NEEDLE CNC SEWING MACHINE



# AMS-252 : 2-NEEDLE CNC SEWING MACHINE

Sewing of Perforated Leather

NEW

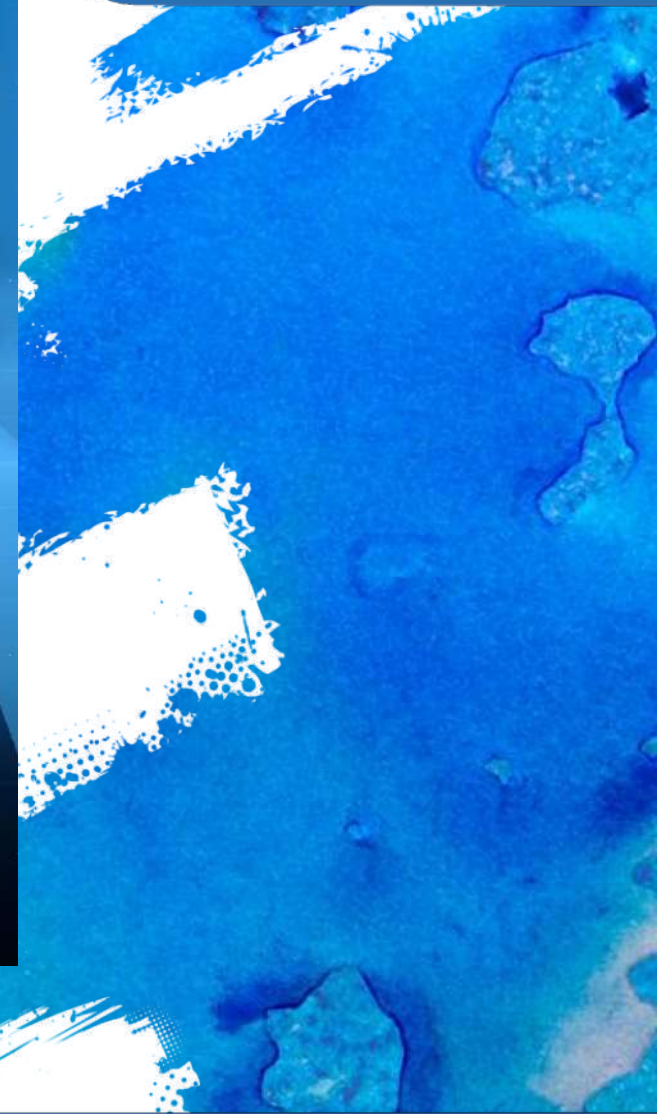
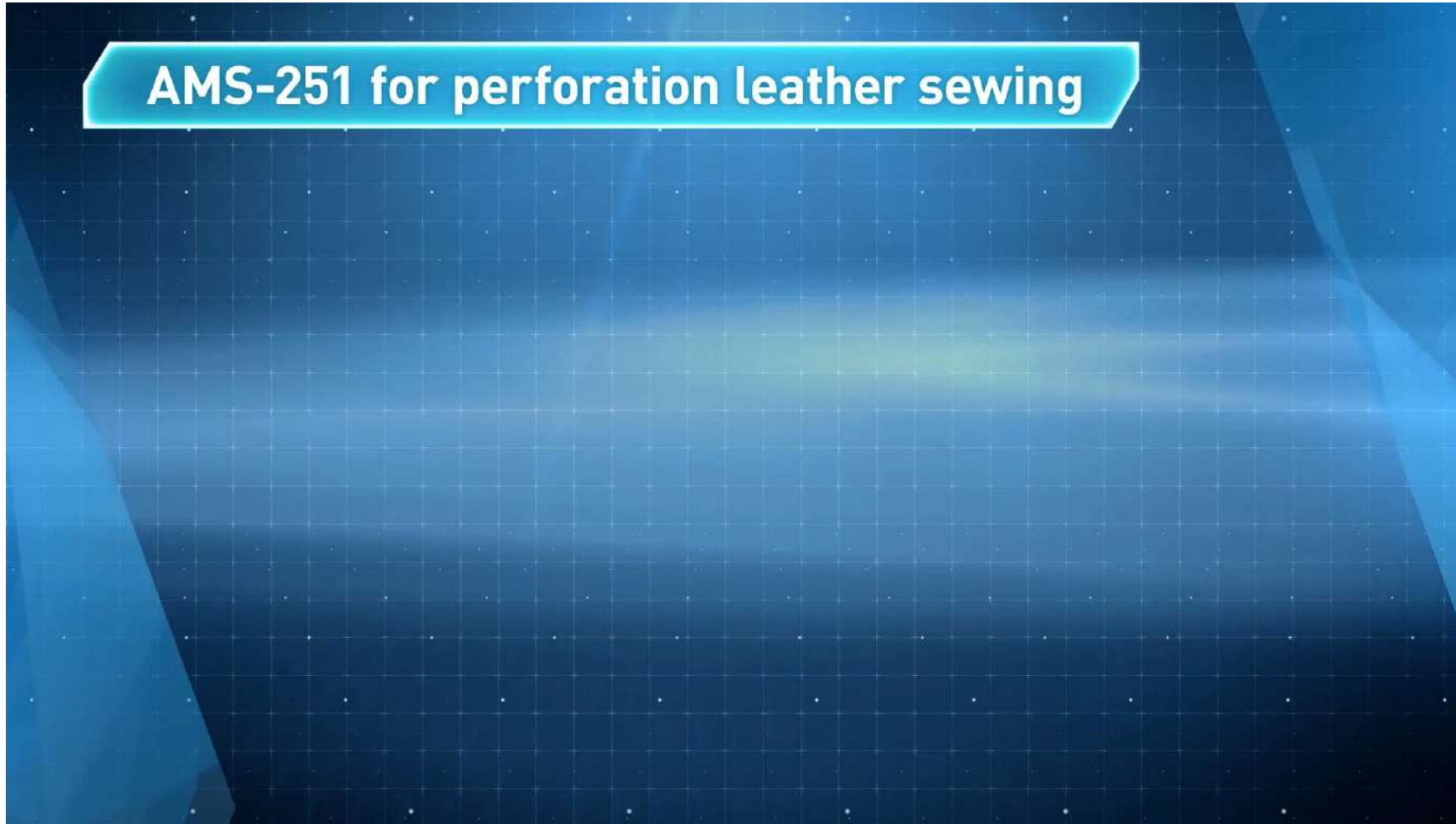


High-quality Production



AMS-251  
with image recognition function

AMS-251 for perforation leather sewing





COMING  
SOON

# PS800 SERIES : NEW PATTERN SEAMER

**JUKI**®

PS800SS12080



PS800SB8045



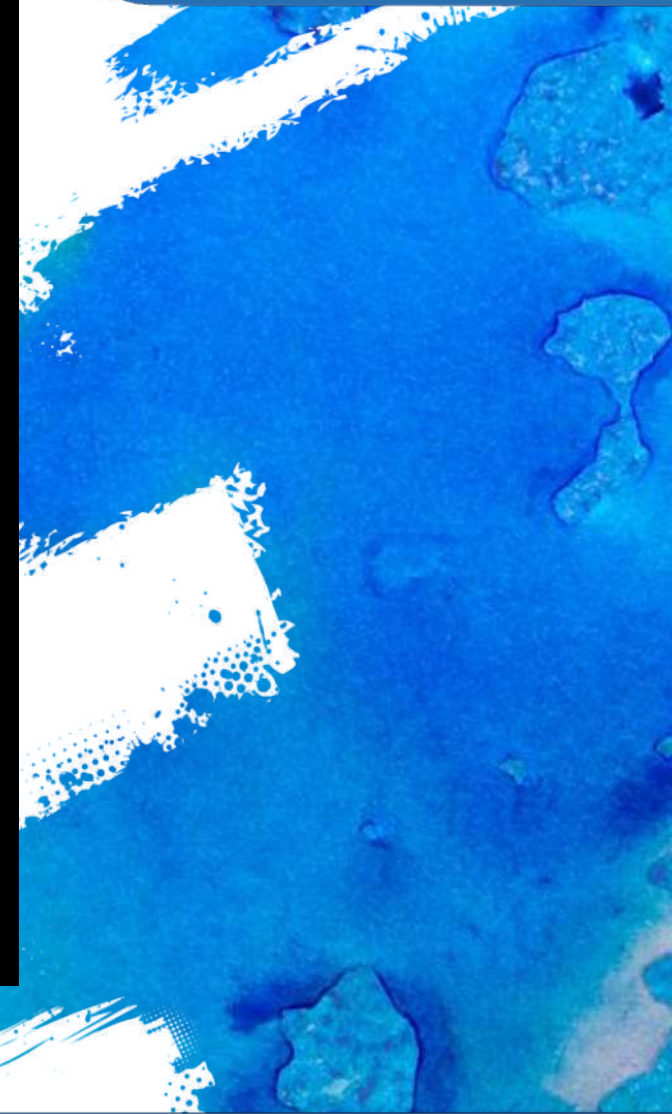
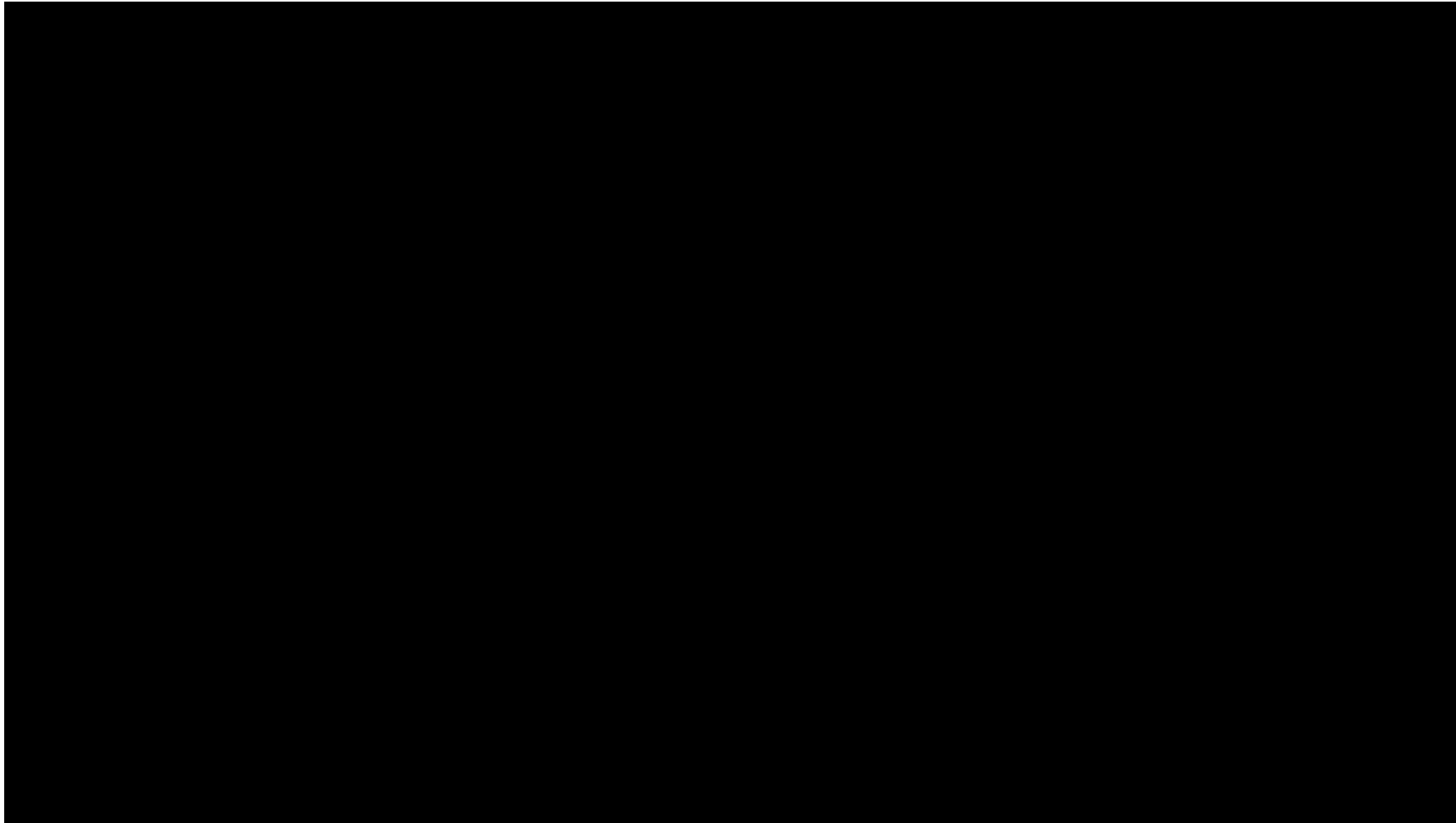
Improving Productivity





# Automatic Pattern Seamer for faster and easier stitching

**JUKI**®





**Digitalization**

Single Needle Lockstitch

Two Needle Lockstitch

Zigzag Stitching

Bartacking

Button Sewing

Buttonholing

Eyelet Buttonholing

Chainstitching

... and more



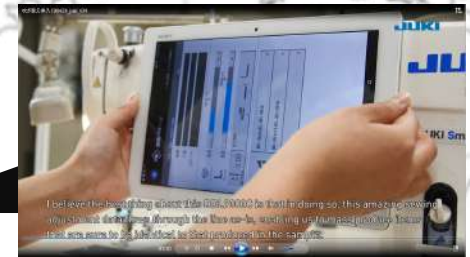


# Digitalized control over machine settings



*Data for the adjustments  
can be transferred by tablet*





DDL9000C creates a new platform is able to share skill and ensure the same quality.

Receive the data and copy to machines in each factories.





Digitalization can reduce down time cause of changing production item.

Before



When style changing, production lines are required...

- 1. Manual adjustment
- 2. Test sewing

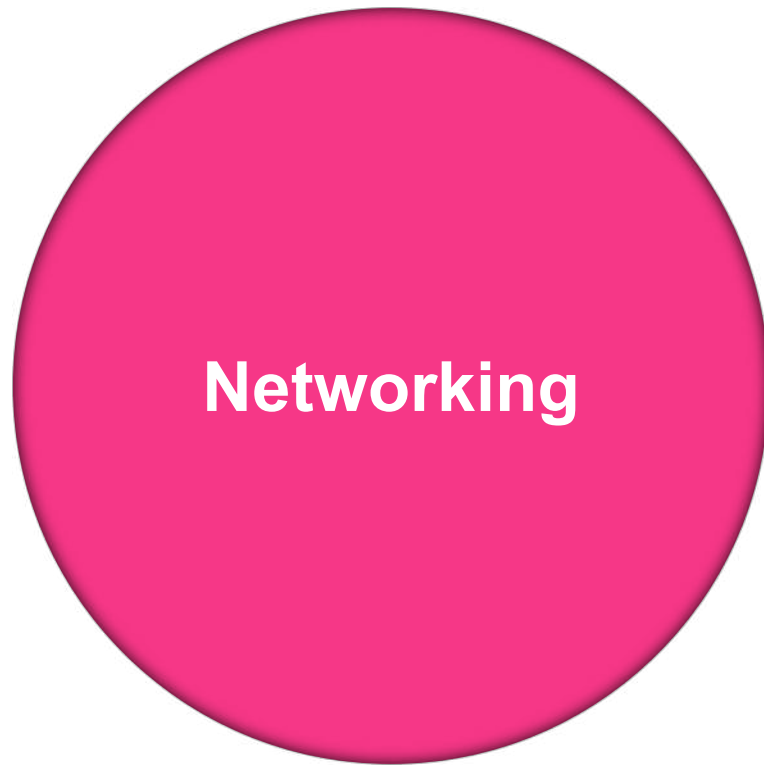
After



When style changing, production lines are required...

Just select a sewing data sent from sampling section.





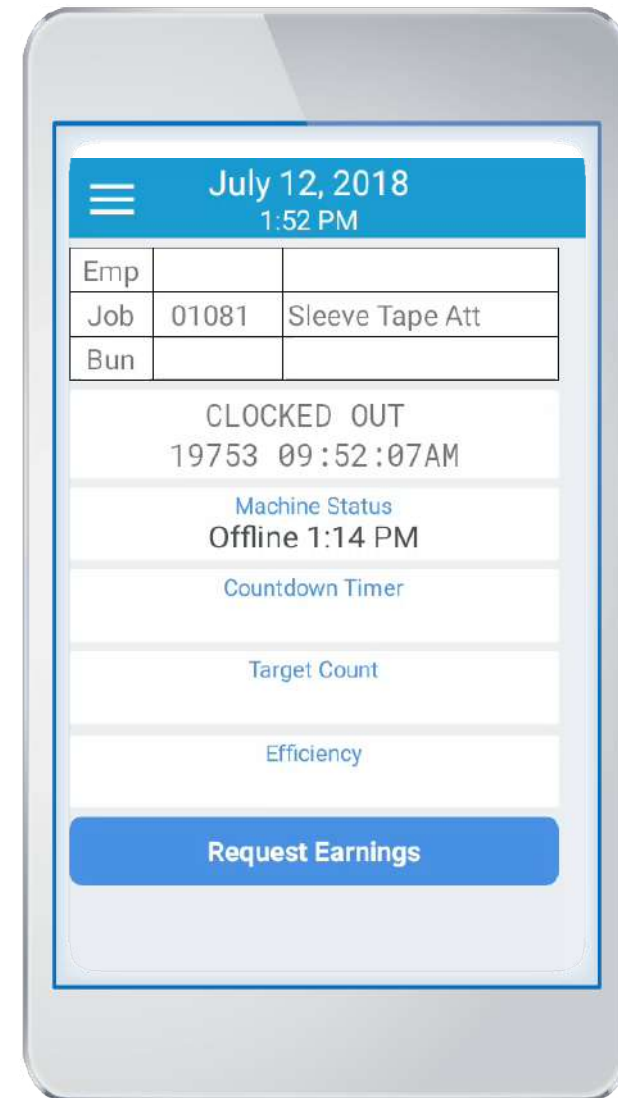
# *JaNets*

*Juki advanced Network system*

**JaNets is a  
production-floor  
control system which  
monitors a production  
process helping to  
improve workflows  
and productivity**



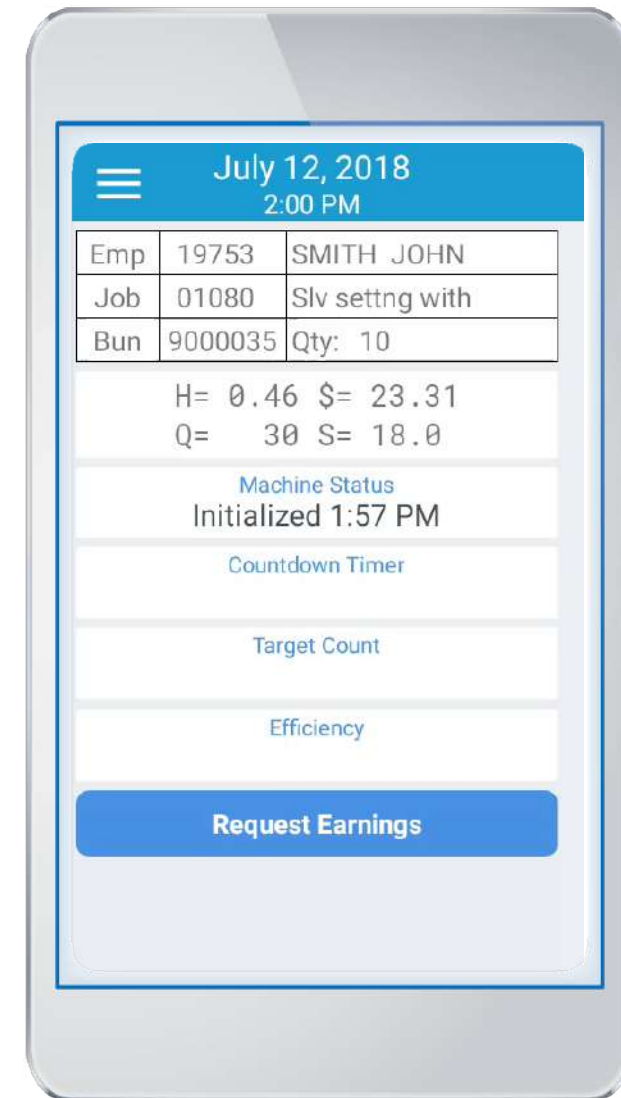
# Clock In



The operator arrives at their sewing station and uses their employee tag to clock-in directly on their JaNets terminal



# Operation



The Bundle tag is scanned on the terminal

## Machine program uploading





# Daily management : Dashboard



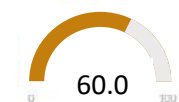
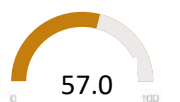
BlueCherry Shop Floor Control Welcome Manager --Language--

DASHBOARD PERFORMANCE PRODUCTION WIP APPROVAL H-TRACK MACHINE SQC

### Section Summary

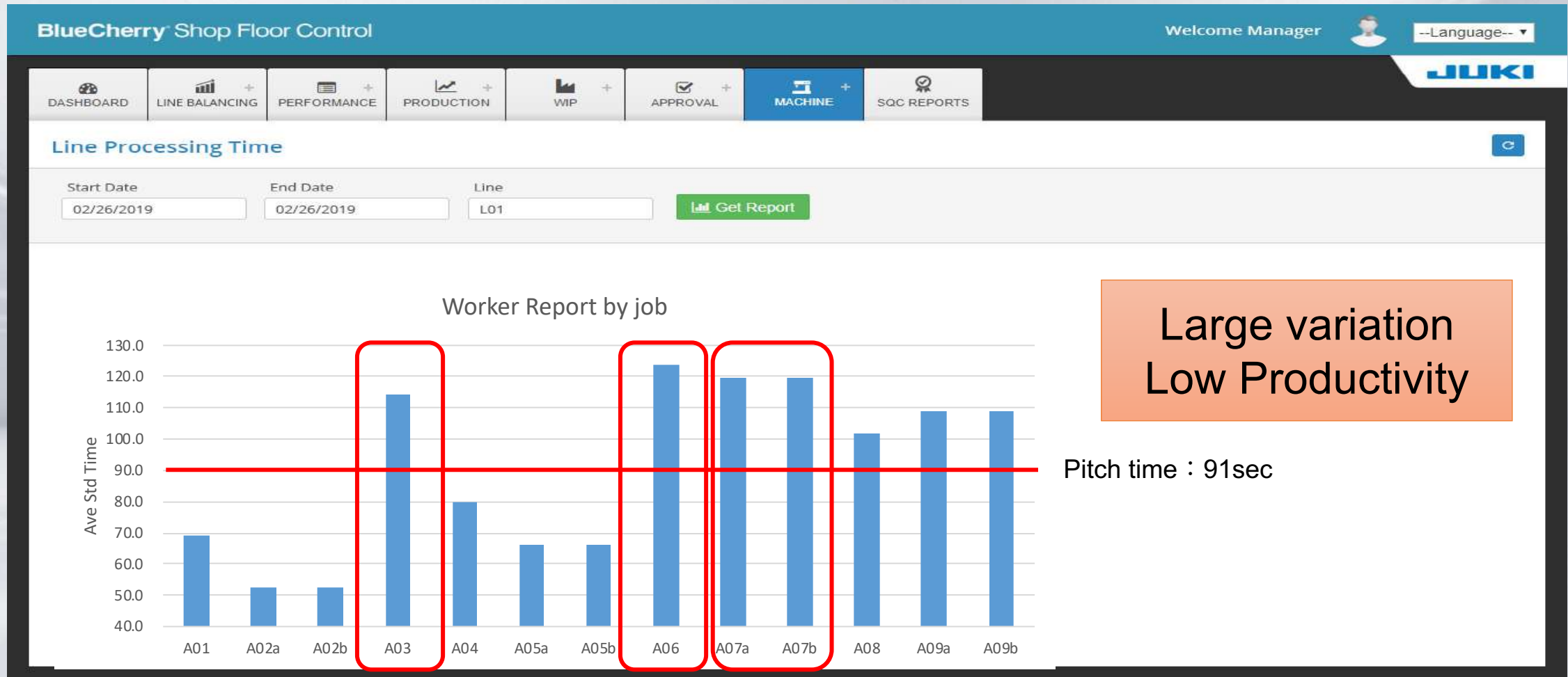
Section :  ALL-SECTION

<b>Total Attendance</b> <div style="text-align: center; font-size: 2em;">28</div>	<b>Absent Operators</b> <div style="text-align: center; font-size: 2em;">0</div>	<b>OIT Standard Operators</b> <div style="text-align: center; font-size: 2em;">1</div>	<b>Production Target</b> <div style="text-align: center; font-size: 2em;">228 / 400</div>	<b>Machine Running Ratio(%)</b> <div style="text-align: center; font-size: 2em;">12.75</div>	<b>Machines (Operating/Total)</b> <div style="text-align: center; font-size: 2em;">24 / 25</div>
--	---	---	--	---	---

<b>Time Utilization</b>  <div style="text-align: right; font-size: 1.5em;">75%</div>	<b>Off-Standard Time</b> 	<b>On-Standard Efficiency</b>  <div style="text-align: center; font-size: 1.5em;">60.0</div>	<b>Overall Efficiency</b>  <div style="text-align: center; font-size: 1.5em;">57.0</div>
--	--	--	--

Top Performers		Low Performers		Low Outputs	
Name	Efficiency	Name	Efficiency	Name	Units
EKANAYAKE, CHANDANI (13236)	118.40	KAVITHA, KAVITHA (20200)	0.37	LINE03, END LINE QC (00003)	1
LOJINI, FATHIMA (19999)	117.06	CHANDIMALI, NIMANTHI (18240)	0.56	PURNIMA, ANJALI (19536)	1
DILRUKSHI, ROHINI (10146)	106.55	WENDROK, RANSI (17930)	0.64	LINE06, END LINE QC (00006)	1
SEELAWATHI, SEELAWATHI (17025)	100.96	FONSEKA, SUSHIMA (17396)		LINE05, END LINE QC (00005)	2

## Check the processing Time



Large variation  
Low Productivity



# Progress of each operators

BlueCherry Shop Floor Control

Welcome Manager Language

[DASHBOARD](#)
[LINE BALANCING](#)
[PERFORMANCE](#)
[PRODUCTION](#)
[WIP](#)
[APPROVAL](#)
[MACHINE](#)
[SQC REPORTS](#)

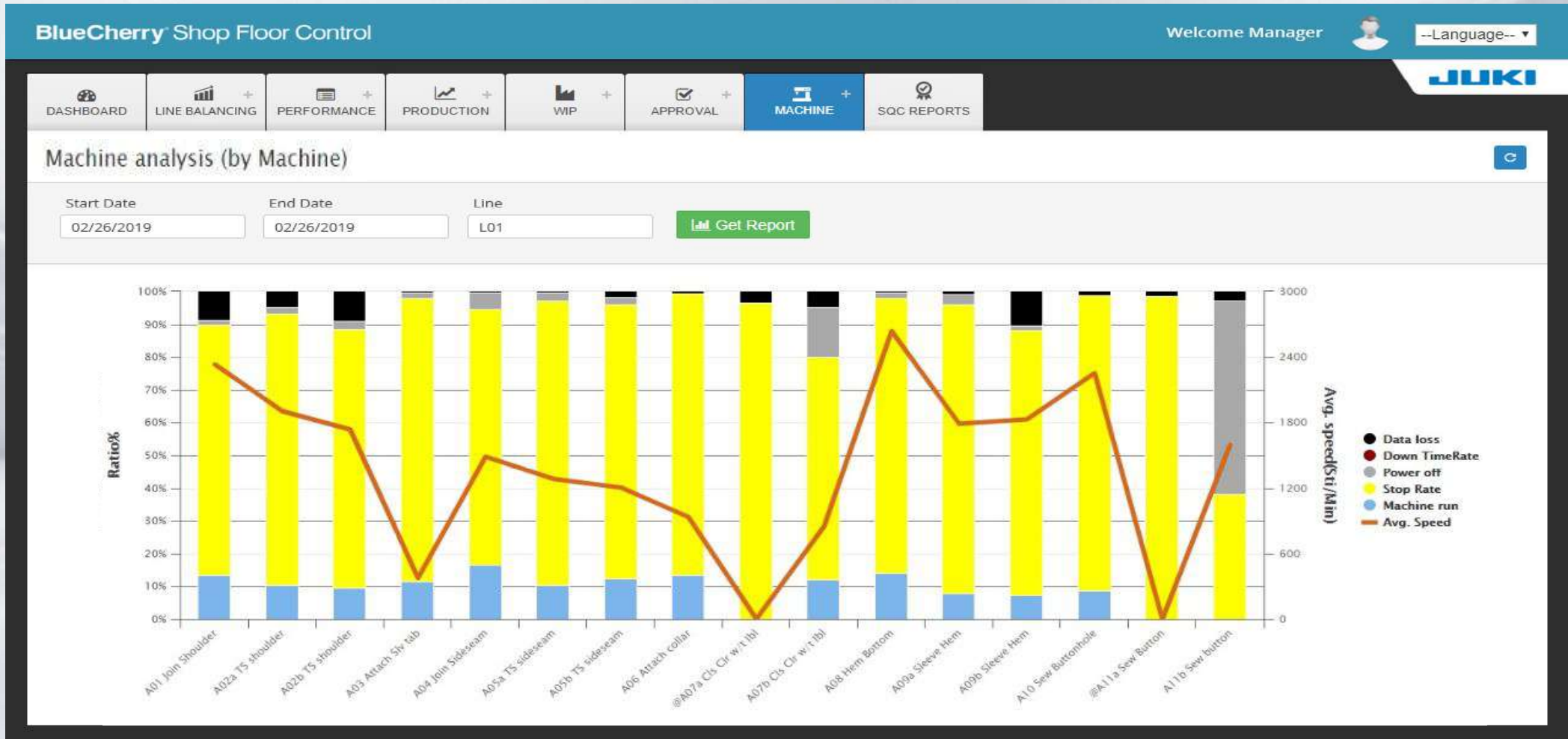
### LINE SUMMARY

<b>DDL</b>  00001 : Job : A01 P/T 318/300	<b>DDL</b>  00002 : Job : A02a P/T 20/50	<b>DDL</b>  00003 : Job : A02b P/T 286/250	<b>DDL</b>  00004 : Job : A03 P/T 226/180	<b>DDL</b>  00005 : Job : A04 P/T 283/300	<b>DDL</b>  00006 : Job : A05a P/T 98/150	<b>DDL</b>  00007 : Job : A05b P/T 172/150
<b>DDL</b>  00008 : Job : A06 P/T 254/300	<b>DDL</b>  00009 : Job : @A07a P/T 131/140	<b>DDL</b>  000010 : Job : A07b P/T 105/140	<b>DDL</b>  00011 : Job : A08 P/T 269/300	<b>DDL</b>  00012 : Job : A09a P/T 155/200	<b>DDL</b>  00013 : Job : A09b P/T 114/400	<b>DDL</b>  00014 : Job : A10 P/T 170/300
<b>DDL</b>  00015 : Job : @A11a P/T 154/300	<b>DDL</b>  00016 : Job : A11b P/T 0/150	<b>DDL</b>  00017 : Job : A03b P/T 115/120	<b>DDL</b>  00018 : Job : A07c P/T 1/20			

Nataraj 5%      Nataraj 148

	Advance Notice
	Normal
	Delay warning
	Delay Notice

# Machine Analysis





# Quality control report



**Thank you for your kind attention!**



**1. AUTOMATIZATION**  
**2. DIGITALIZATION**  
**3. NETWORK**



[jukieurope.com](http://jukieurope.com)



[linkedin.com/company/juki](https://linkedin.com/company/juki)



[youtube.com/jukicentraleurope](https://youtube.com/jukicentraleurope)